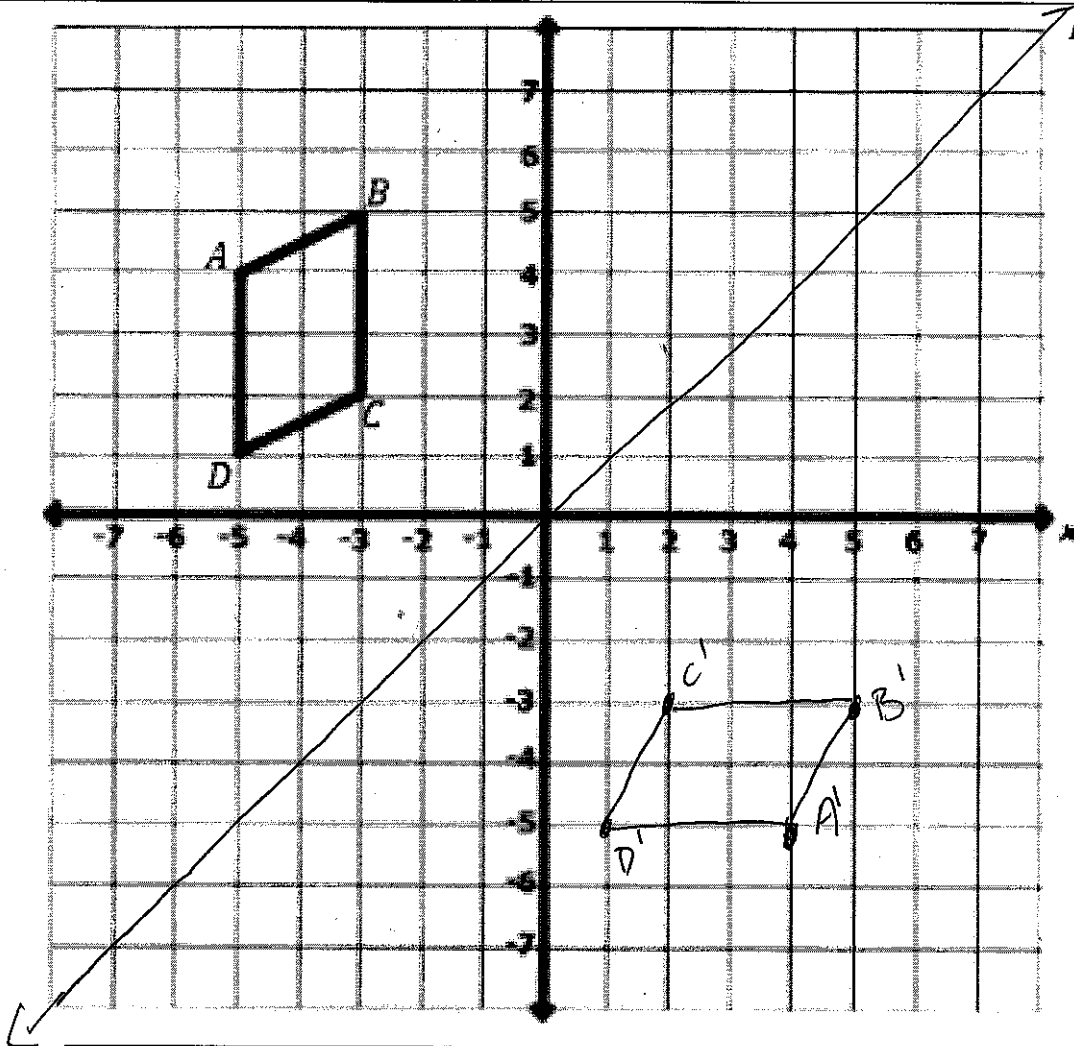


Key

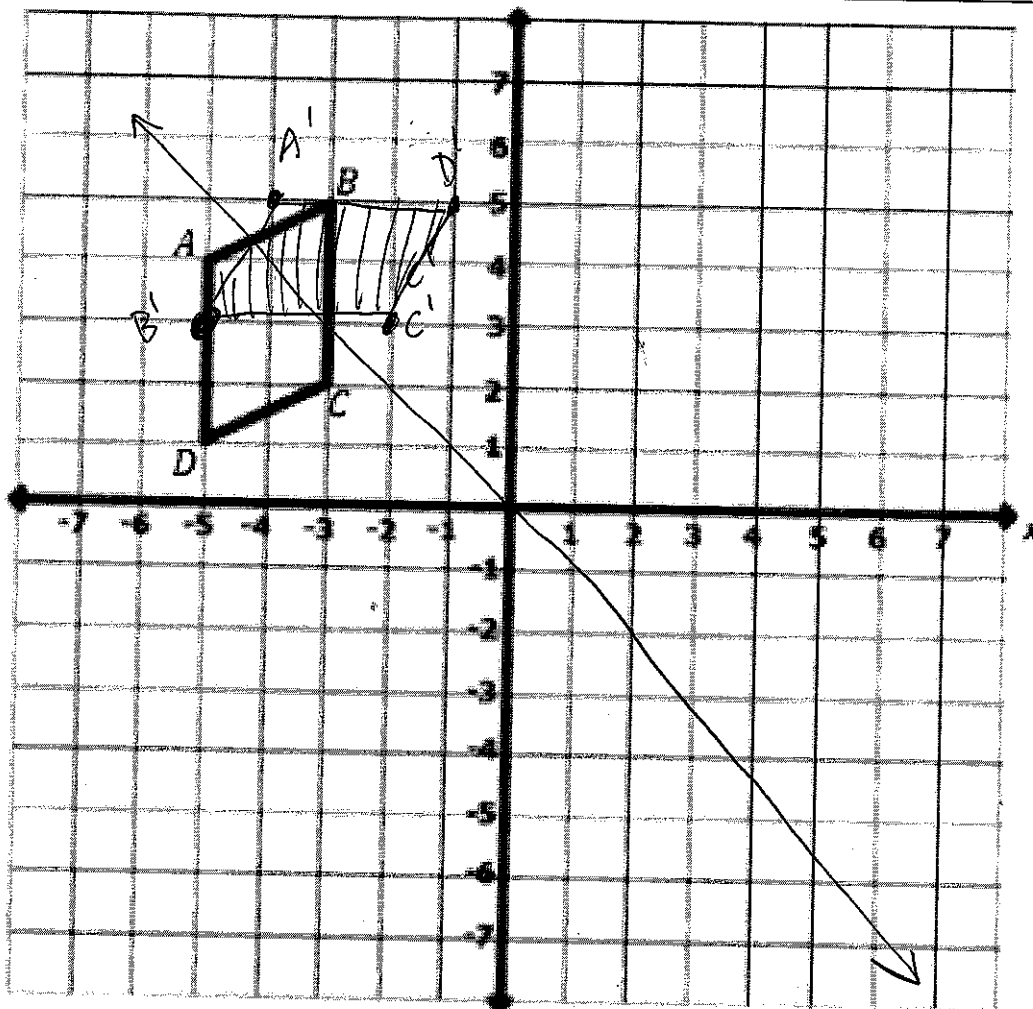
Reflect over the line $y=x$



Vertices	Pre-Image	image
A	$(-5, 4)$	$(4, -5)$
B	$(-3, 5)$	$(5, -3)$
C	$(-3, 2)$	$(2, -3)$
D	$(-5, 1)$	$(1, -5)$

RULE: $(x, y) \rightarrow (\underline{y}, \underline{x})$

Reflect over the line $y=-x$



Vertices	Pre-Image	image
A	$(-5, 4)$	$(-4, 5)$
B	$(-3, 5)$	$(-5, 3)$
C	$(-3, 2)$	$(-2, 3)$
D	$(-5, 1)$	$(-1, 5)$

RULE: $(x, y) \rightarrow (-y, -x)$