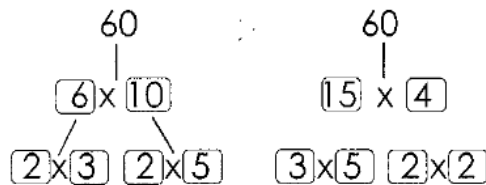


Name: _____

Prime Factorization Trees: See the example and then complete the following:
Worksheet #1

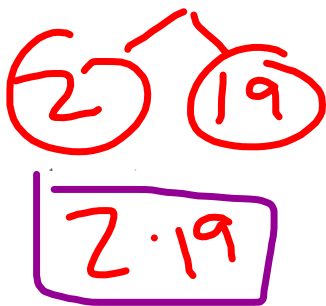
Example:



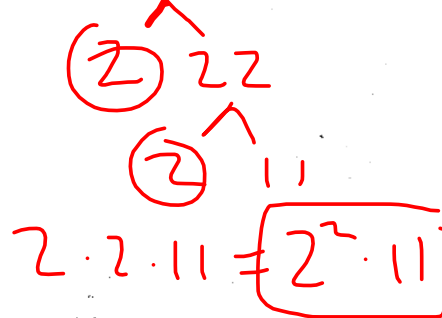
When factoring the numbers, there is often more than 1 way. It won't matter which numbers you use. You will always end up with the same prime factors of the number.

The prime factors for 60 are: 2, 3 and 5.

1.) 38



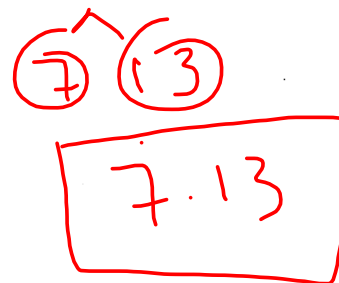
2.) 44



3.) 72



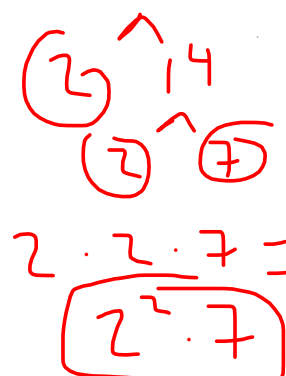
4.) 91



5.) 70



6.) 28



<http://math.about.com>